



GMT MONTHLY MEMBERSHIP PROGRESS REPORT

Results as of: 11/30/2017

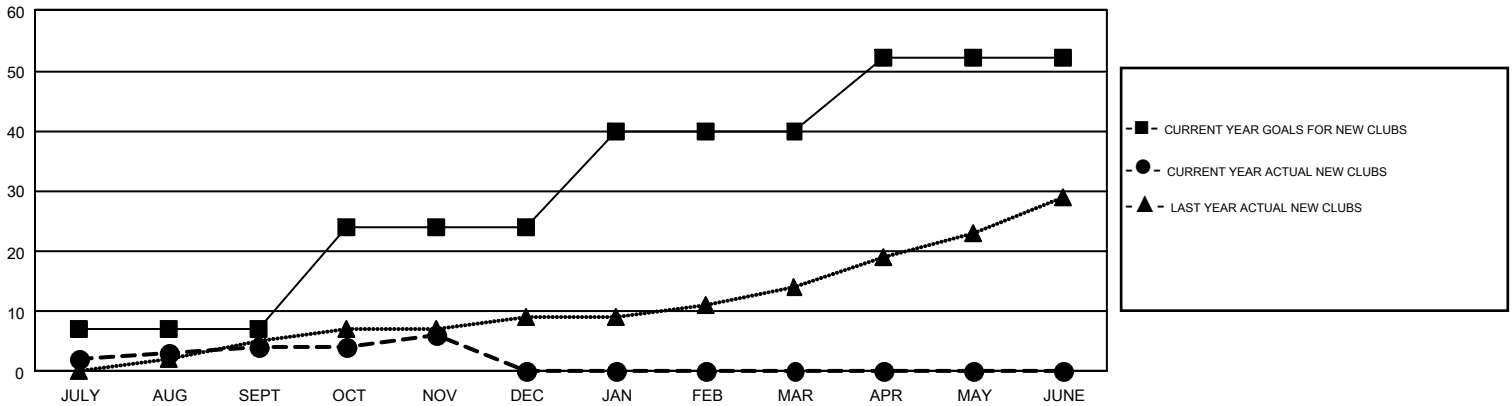
GMT Constitutional Area 1, Group E

GMT: STACEY JONES

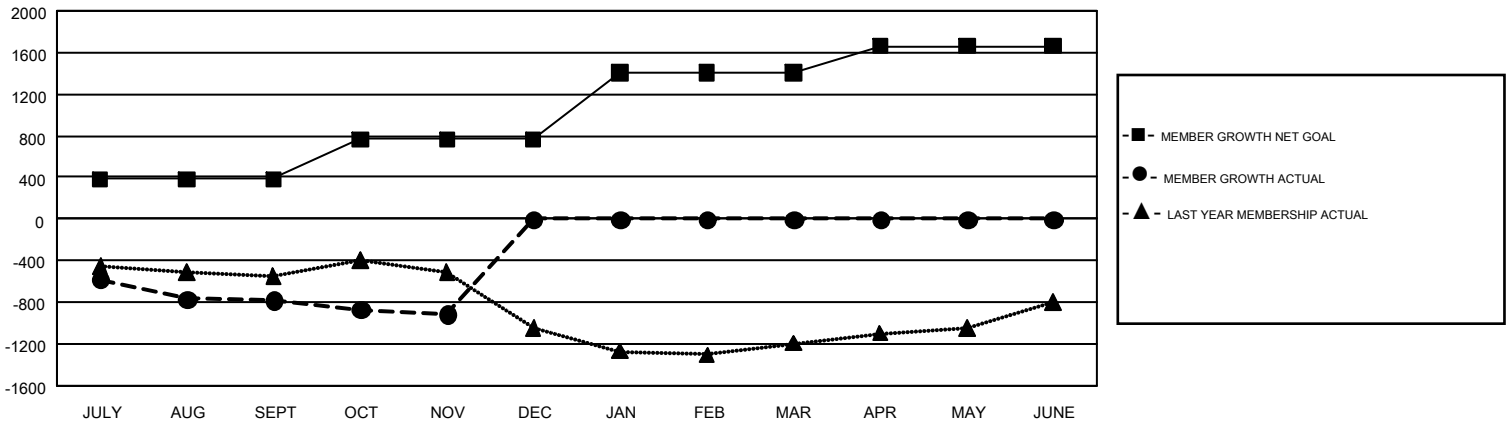
REPORT DOES NOT INCLUDE CLUBS IN UNDISTRICTED AREAS.

Clubs				Members			
RESULTS FOR 2017-2018				RESULTS FOR 2017-2018			
QUARTER	NEW CLUB GOAL	NEW CLUBS	DROPPED CLUBS	QUARTER	MEMBER GROWTH NET GOAL	MEMBER GROWTH ACTUAL	DROPPED MEMBERS ACTUAL (including transfers)
JULY/AUG/SEPT	7	4	9	JULY/AUG/SEPT	385	864	1,529
OCT/NOV/DEC	17	2	3	OCT/NOV/DEC	381	591	674
JAN/FEB/MAR	16	0	0	JAN/FEB/MAR	636	0	0
APR/MAY/JUNE	12	0	0	APR/MAY/JUNE	260	0	0

GOALS AND ACTUAL NEW CLUBS CUMULATIVE



GOALS AND ACTUAL MEMBERS CUMULATIVE



DROPPED CLUBS: 12	509 CLUBS OF 1,561 ADDED 1 OR MORE NEW MEMBERS	GENDER DISTRIBUTION MALE 23,979 (64.12%) FEMALE 13,418 (35.88%)
DROPPED MEMBERS DECEASED 250 CLUB CANCELLED 48 OTHER 1,903 <hr/> TOTAL 2,201	CLICK HERE FOR CUMULATIVE MEMBERSHIP DATA	TOTAL FAMILY UNIT MEMBERS 6,988 FAMILY MEMBERS PAYING HALF DUES 3,583